

WELCOME TO JOIN US



WWW.WANHAOUNIVERSITY.COM

WANHAO university is a comprehensive online education platform that has free 3D Printing courses, forum, model database, 3D printer technical support, online video broadcast that you can have face to face communication with 3D printing experts. Join us and improve your skill in 3D printing.



Search WANHAO on Facebook.

WANHAO Facebook community groups provide real time communication between WANHAO USERS and WANHAO SUPPORT TEAM. . There are many discussions, troubleshooting, modifications and users experience sharing. You would make a lot friends and lean a lot in these groups.



<https://groups.google.com/forum/#!forum/wanhao-printer-3d>.

WANHAO Google forum is a large technician communication forum which provide communication platform for enthusiast and technician. You can find many interesting topic here. And you can find most printer issue topic and solution here. You can't miss it.



Search WANHAO on Youtube.

There are over 60K video cover all topic from unboxing, noob guidance, installation, repairing and so on. You can almost find all topic you are interested in.



WWW.WANHAO3DGROUP.COM.

Find your local distributor and reseller. Speak with your own language and get local service worldwide.



DUPLICATOR 9 GETTING STARTED GUIDE



Thanks for choosing Wanhao 3D Printer products. You're just moments away from printing your first 3D model. It's important that you follow these steps carefully to ensure correct setup of your 3D Printer. You can also visit [www.wanhao3dprinter.com/Video/D9 video/wanhao D9 unboxing](http://www.wanhao3dprinter.com/Video/D9%20video/wanhao%20D9%20unboxing) for step by step guide on unboxing and setup, levelling, filament installation and printing.

Package Contents:

- | | |
|---------------------------|----------------------------------|
| 1 x WANHAO 3D Printer | 1 x Hex Key Set |
| 1 x Filament Spool Holder | 6 x Hex Bolts |
| 1 x Filament Spool Stand | 2 x Plastic belts |
| 1 x Power Cable | 1 x 1.75mm PLA Filament |
| 1 x USB Cable | 1 x Instruction manual |
| 1 x 8GB SD Card | 1 x Getting Started Guide |
| 2 x Hex Screw Driver | 1 x Needle for unclugging nozzle |



ASSEMBLING AND MOUNTING



1 Take out all components from the box and place them on the flat ground.

- 1-Base
- 2-Z axis Tower Pillar*2
- 3-X axis rail
- 4-X axis gantry
- 5-MK12 Extruder



2 Place the Base on it's side. Find the Z axis pillar with sticker No.2. Slide the No.2 pillar into the base vertical locker. Then tighten the bolt at bottom of base.

CONSTRUCT AND CONNECT (CONT.)



3 Tighten the locking bolt clockwise. Then install the other Z axis pillar onto the Base.



4 Loose the two locking bolt on No.3 and No.4 Z axis pillar by around 5mm. So there will be sufficient space for X axis pillar to slide in.



5 Slide the X axis pillar into the No.3 and No.4 bolts. If there's not enough space, you may need to re-loose the locking bolt.



6 To tighten the locking bolt through the hole on top of the X axis pillar. Lock both No.3 and No.4 pillar.

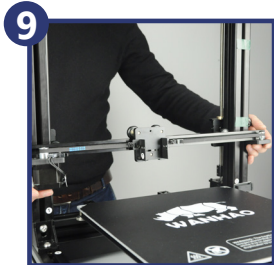


7 Insert the plastic cover onto the two ends of X axis pillar.

Note: Please double check the Z axis and X axis pillars. If any bolt not secured. You need to secure the screws to ensure the gantry are steady and tight.



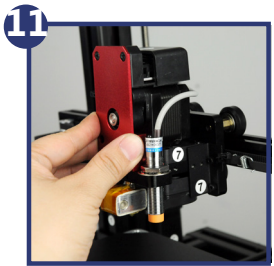
8 Rotate the cylinder holder for a bit but not too close. Tight enough that can not slide into pillar freely. This is also same to the other side with stickers No.6.



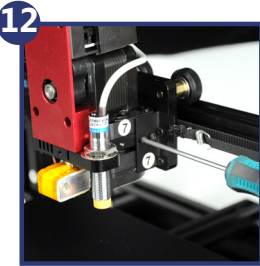
9 Mount the X axis rail. Align the right and left side holders first. Please make sure the rail is located in the middle of the X axis. You may need to adjust the distance to both ends through the cylinder holders.



10 Then tighten the bolts on both end of No.5 and No.6.

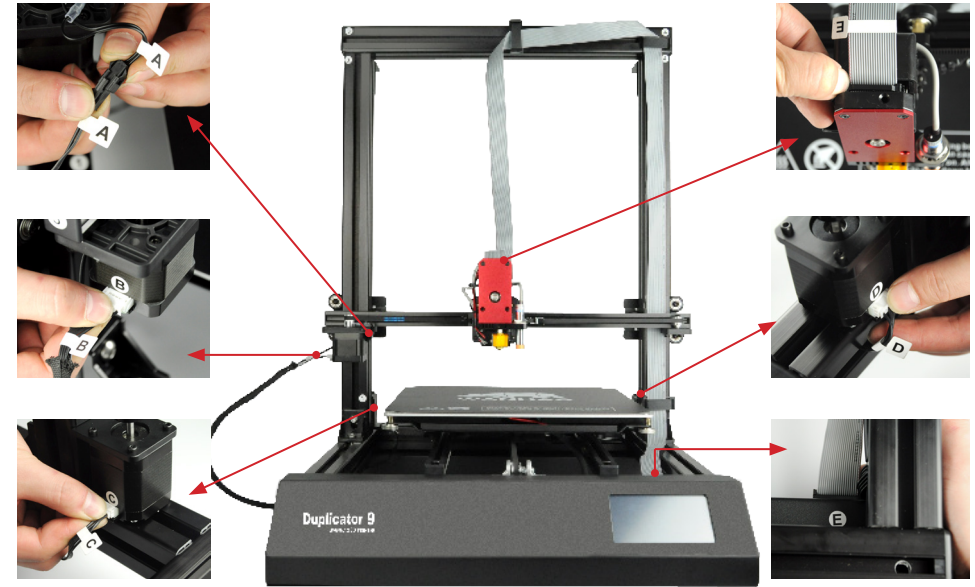


11 Mount the MK12 extruder onto the X axis holder. Make sure the locking holes match to the holder holes.



12 A total of 4 bolts need to be tightened, but the first bolt should not be too tight until the other three bolts are mounted, then tighten all the bolts together.

WIRING INSTRUCTION



LEVELING BEFORE PRINTING



1 Turn the couple to lower the two Z axis in order to level the two Z axis at same height. Note: The ruler or height gauge would provide more accurate height for both two Z axis. The two axis need to be at same height.



2 Please go to home page and select "LEVEL---AUTO LEVEL", this function would auto level the bed.

NOTE: Once you have done the auto leveling. The printer would memorize the leveling data for the next printing. You don't have to level the printer every time, unless you feel the printer is not leveled. Auto leveling is for general printing purpose, if you need some special layer thickness or special purpose, you may need to adjust the 4 bolts under bed to achieve more precise distance.

Manual leveling. If the Auto leveling can not meet your needs, you may try manual leveling. Click "LEVEL---MANUAL LEVEL", the instruction would guide you to check 4 bed points.